



Houghton Lane, Ellesmere Port, CH65

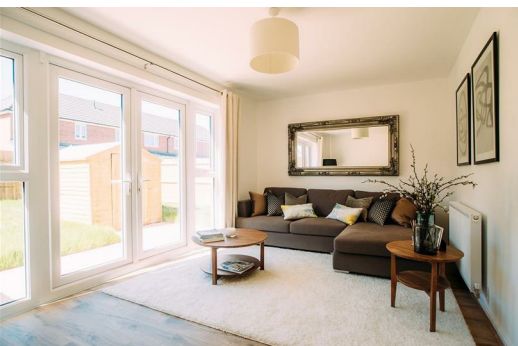
£1,190 Per Month

Spread over two phases, our Cromwell Road development offers a wonderful mix of two to four bedroom houses in an area bursting with potential.

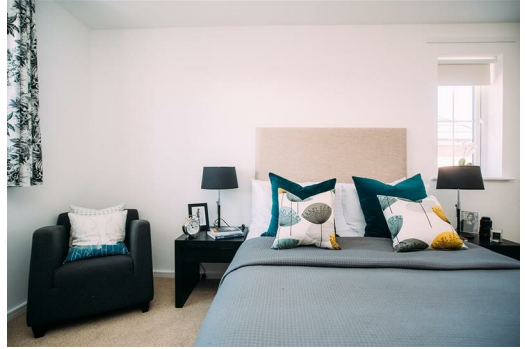
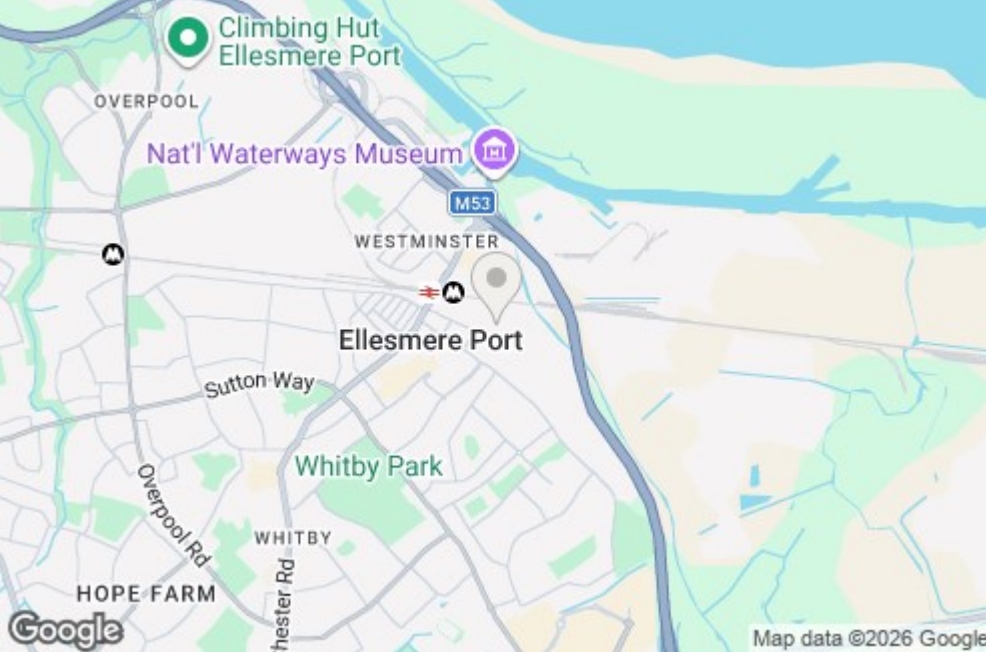
Ellesmere Port is just six miles from Chester town centre, but boasts its own excellent hub for shopping, eating and socialising. With Cheshire Oaks outlet village less than three miles away, all your retail needs are well catered for.

The site is close to local schools, parks and leisure facilities, ideal for you and your family to call home, whilst being close to the M53 gives you instance access to the wider region.

The beautifully designed Weaver makes a wonderful family home or a spacious haven for couples. The front door leads you straight into the hallway with a WC to one side. Further on is the contemporary open-plan kitchen and dining area. Beyond this is the comfortable living room with plenty of space and fabulous French windows that open out onto the garden. Great news if you enjoy al fresco dining and entertaining.



31 Houghton Lane, Ellesmere Port, Cheshire, CH65 4FH



Energy Efficiency Rating		Environmental Impact (CO ₂) Rating	
Current	Potential	Current	Potential
84	96	37	38
<p>100-96 A</p> <p>95-91 B</p> <p>85-84 C</p> <p>82-81 D</p> <p>79-78 E</p> <p>75-74 F</p> <p>70-69 G</p>		<p>100-95 A</p> <p>90-85 B</p> <p>80-75 C</p> <p>70-65 D</p> <p>60-55 E</p> <p>50-45 F</p> <p>45-40 G</p>	

Ascend
Built on higher standards